



Florida Agricultural &  
Residential  
Investments



**Equine Estates      \$200,000      (\$10,900/ac)      18.3**

- St Lucie Co Ag-1 , but in TVC FLUC
- Easy access to Indrio & I-95 Interchange
- Ft. Pierce Farms Drainage District
- Shared private entrance to 30 acre Equine Estates

Just 1 mile north of the I-95 and Indrio Road interchanges Equine Estates is convenient to everywhere on the Treasure Coast. From this unique site, it's only 20 minutes to the Atlantic Ocean through Vero Beach to the north-east or Ft Pierce to the southeast. And if you jump on I-95, a quick exit to West Palm or Orlando—each less than a 1 -1/2 hour drive.



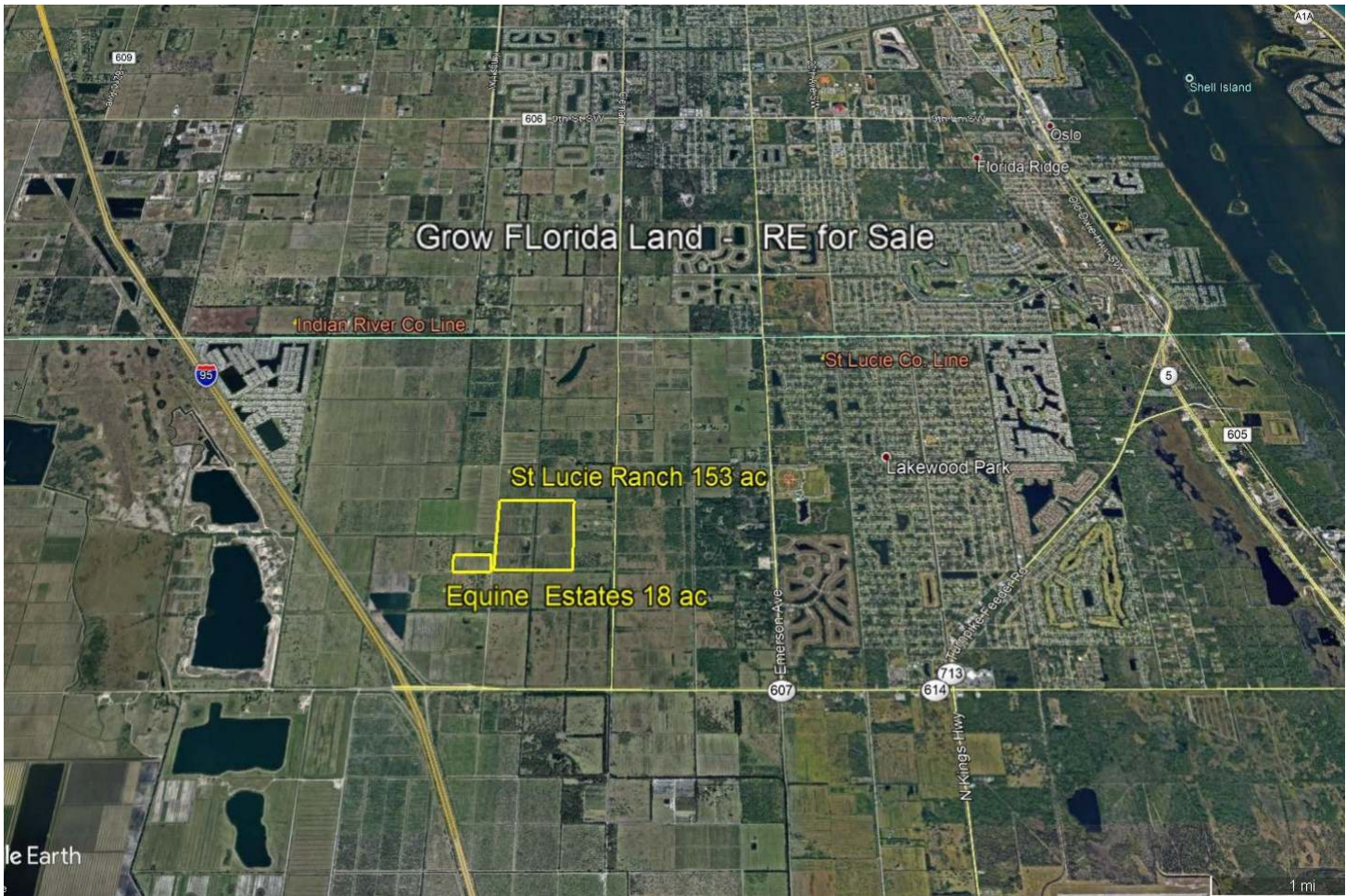
Information presented here is deemed to be reliable, but not guaranteed. Further, pricing is subject to change. For more information on this property please contact Tom Jerkins, @ *Grow Florida Land, Realty*, at (772) 469-1576



Florida Agricultural & Residential Investments



**Equine Estates      \$200,000      (\$10,900/ac )      18.3 ac**



Parcel ID #'s	Acres	2018 Taxes	per Ac
1309-323-0002-000-7	18.31	\$ 414	\$ 23

Information presented here is deemed to be reliable, but not guaranteed. Further, pricing is subject to change. For more information on this property please contact Tom Jerkins, @ *Grow Florida Land, Realty*, at (772) 469-1576