



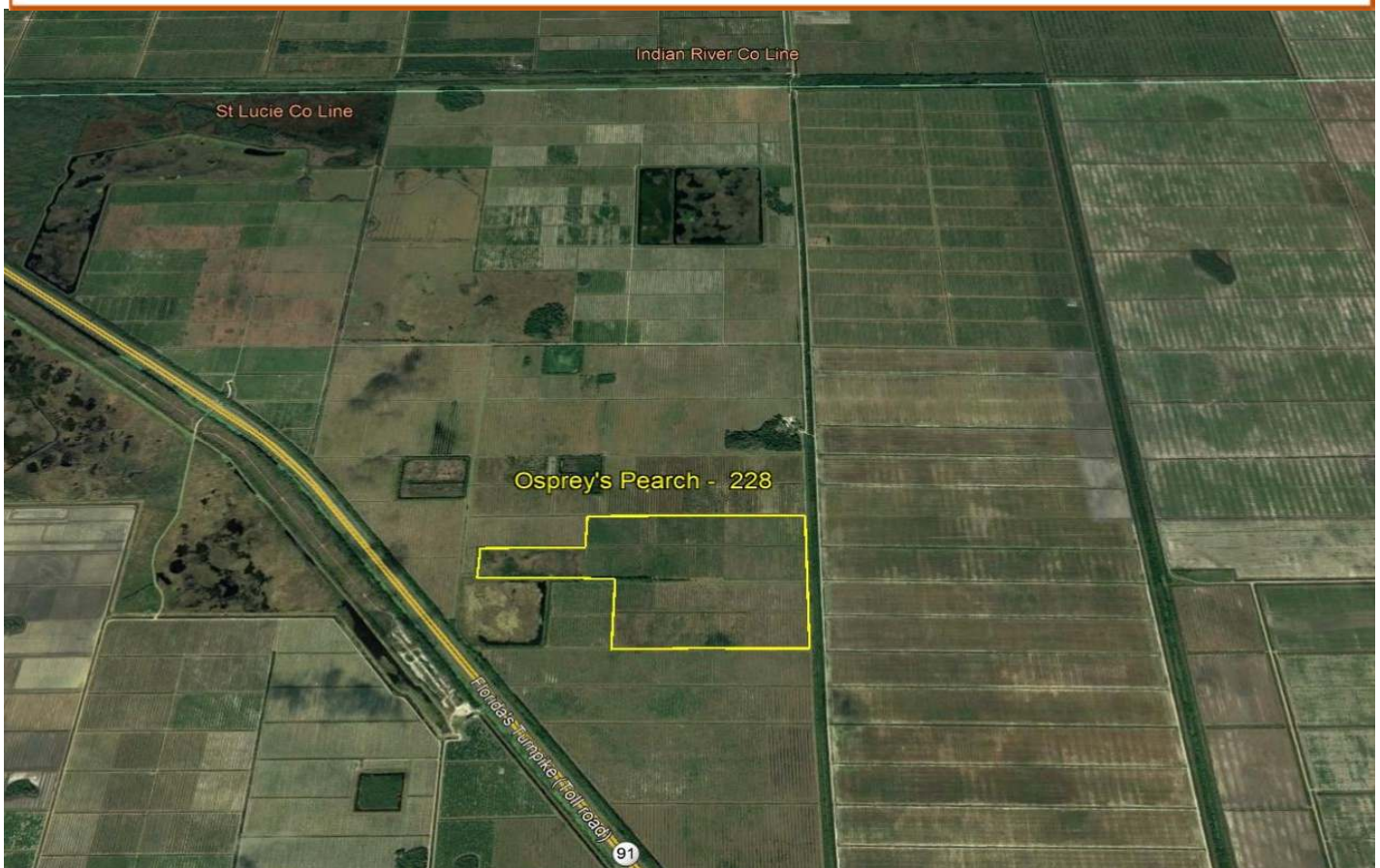
Florida Agricultural &
Residential
Investments



Osprey's Perch Ranch \$875,000 (\$3,800/ac) 228 ac

- St Lucie Co Ag-1they'll never find you here
- Better get directions—access from western Orange Avenue
- Part of Rebus Property Owners Association (RPOA)

OK, it's a little remote.....but a lot going on out here - lots of solar panels and water storage uses, as well as just very private recreational use. If you think you can find it, give it a look!



Information presented here is deemed to be reliable, but not guaranteed. Further, pricing is subject to change. For more information on this property please contact Tom Jerkins, @ *Grow Florida Land, Realty*, at (772) 469-1576



Florida Agricultural & Residential Investments



Osprey's Perch Ranch \$875,000 (\$3,800/ac) 228 ac



Parcel ID #'s	Acres	2018 Taxes	per Ac
1113-131-0001-000-0	41.89	\$ 559	\$ 13
1113-131-0001-010-3	41.79	\$ 662	\$ 16
1113-231-0001-010-0	24.41	\$ 18	\$ 1
1113-231-0001-020-3	26.42	\$ 410	\$ 16
1113-311-0002-000-9	93.62	\$ 493	\$ 5

Information presented here is deemed to be reliable, but not guaranteed. Further, pricing is subject to change. For more information on this property please contact Tom Jerkins, @ *Grow Florida Land, Realty*, at (772) 469-1576